

# Summary of statistics of animal use in research and teaching, Victoria

1 January 2014 to 31 December 2014  
Report number 32



© The State of Victoria Department of Economic Development, Jobs, Transport & Resources 2015



This work is licensed under a Creative Commons Attribution 3.0 Australia licence. You are free to re-use the work under that licence, on the condition that you credit the State of Victoria as author. The licence does not apply to any images, photographs or branding, including the Victorian Coat of Arms, the Victorian Government logo and the Department of Economic Development, Jobs, Transport & Resources logo. To view a copy of this licence, visit <http://creativecommons.org/licenses/by/3.0/au/deed.en>

ISBN 2203-4196

#### **Accessibility**

If you would like to receive this publication in an alternative format, please telephone DEDJTR Customer Service Centre 136 186, via the National Relay Service on 133 677, [www.relayservice.com.au](http://www.relayservice.com.au). This document is also available on the internet at [www.agriculture.vic.gov.au](http://www.agriculture.vic.gov.au)

#### **Disclaimer**

This publication may be of assistance to you but the State of Victoria and its employees do not guarantee that the publication is without flaw of any kind or is wholly appropriate for your particular purposes and therefore disclaims all liability for any error, loss or other consequence which may arise from you relying on any information in this publication.

# Contents

1. Introduction	2
<hr/>	
2. Number of animals used	3
<hr/>	
3. Aspects of animal use	5
<hr/>	
4. Specified animals in breeding colonies	7
<hr/>	
5. Scientific procedure licences and projects	8
<hr/>	

# 1. Introduction

The following figures and tables present a summary of animal use in research and teaching in Victoria. The 2014 data are set in the context of previous years' data to demonstrate trends over time. Detailed data are available in the full report of *Statistics of animal use in research and teaching, Victoria* (report number 32).

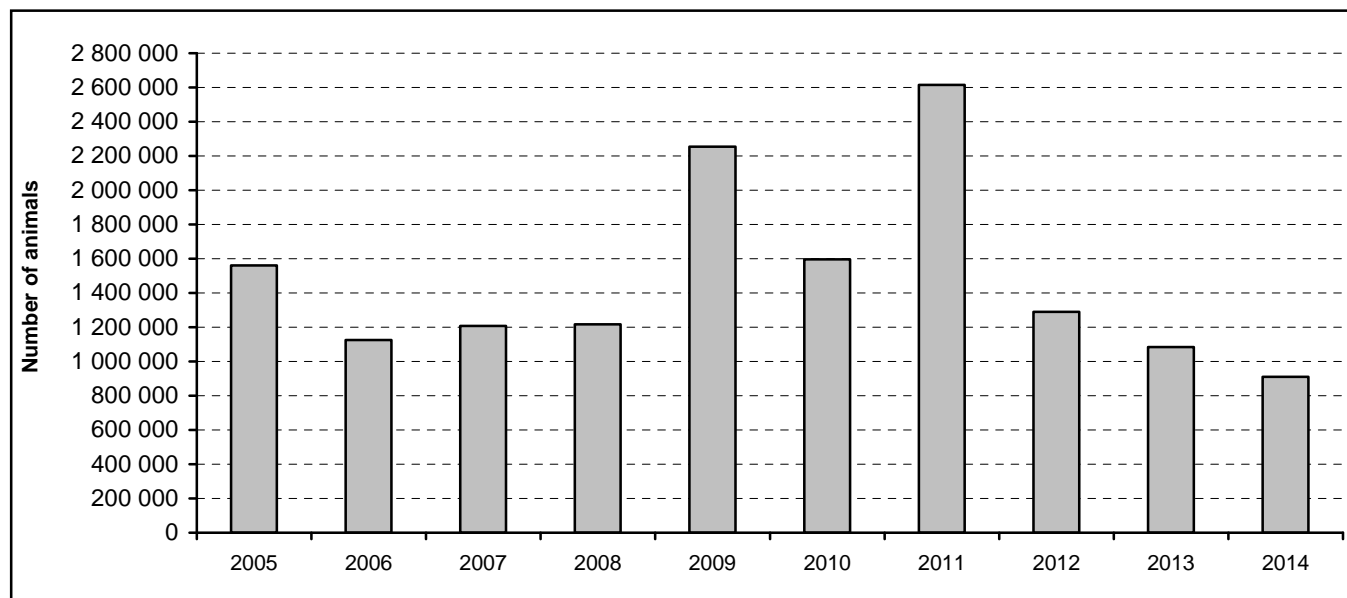
The Secretary of the Department of Economic Development, Jobs, Transport & Resources receives annual summary data from all institutions licensed under the *Prevention of Cruelty to Animals Act 1986* to use animals in research and teaching in Victoria. For each year of the project, an 'Animal Use Return' form describing the animal use must be submitted in accordance with Regulation 100 of the *Prevention of Cruelty to Animals Regulations 2008*. Each project involving animal use must be approved by an Animal Ethics Committee.

The Act defines a 'specified animal' as a mouse, rat or rabbit that is not bred in its native habitat, or a guinea pig, or non-human primate (that is, laboratory animals).

## 2. Number of animals used

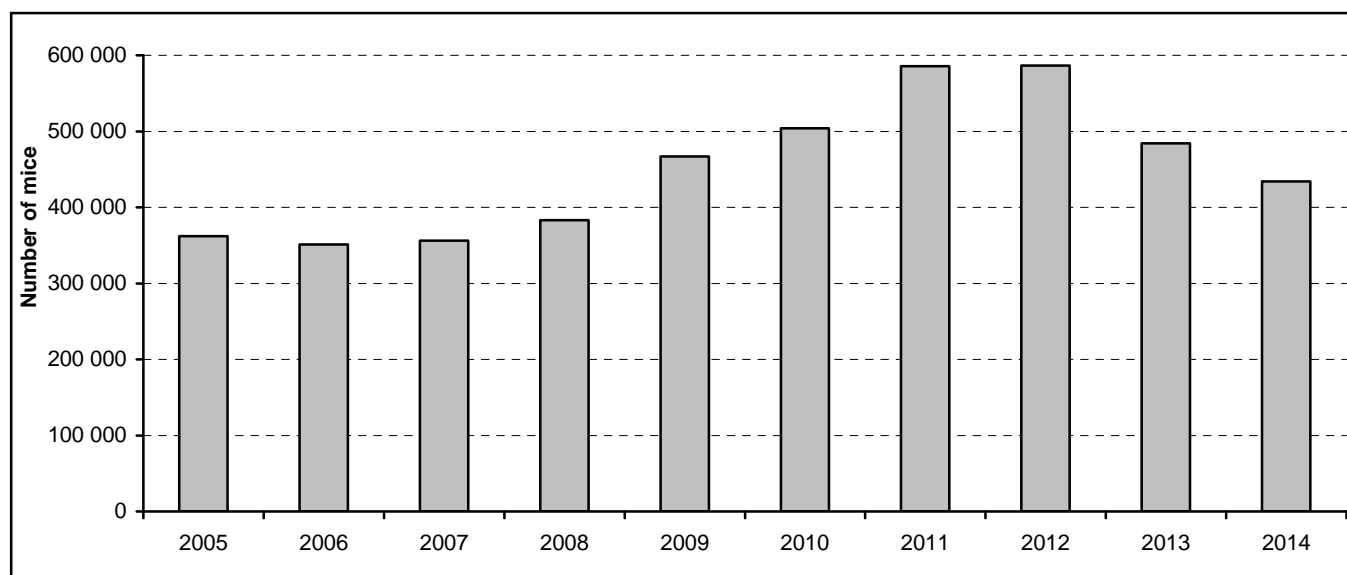
**Figure 1. Total animal use, 2005–14**

The total number of animals used in research and teaching in 2014 was 910 052. The high total for 2011 is explained by a single poultry project that used 1 000 000 birds.



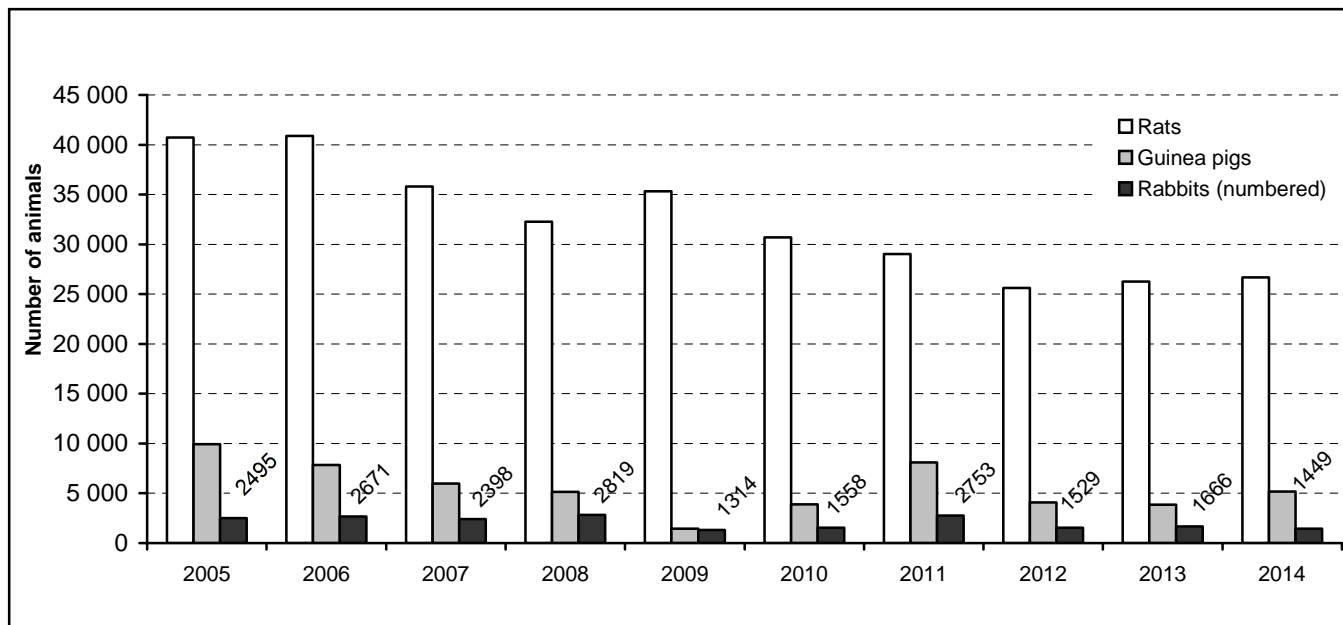
**Figure 2. Specified mouse use, 2005–14**

A total of 434 262 specified mice were used in 2014, compared with the long term average of 451 432.



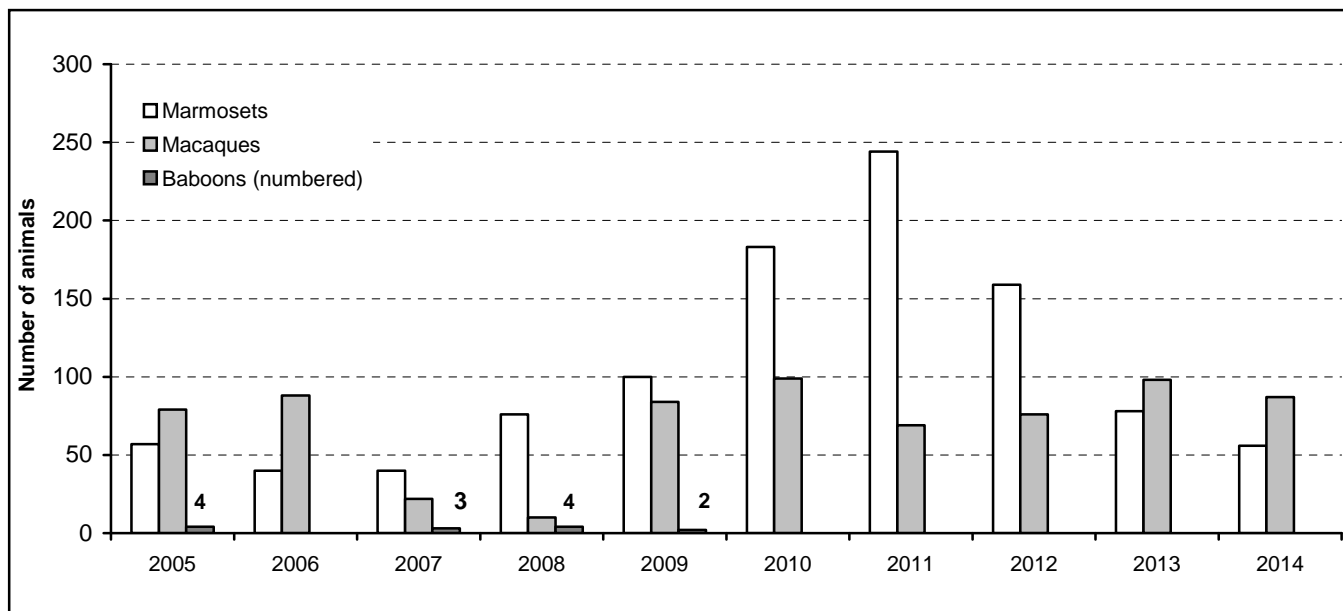
**Figure 3. Specified animal use excluding mice and non-human primates, 2005–14**

A total of 33 275 specified rats, guinea pigs and rabbits were used in 2014, compared with the long term average of 39 936. It comprised 26 666 rats (long term average of 32 325), 5160 guinea pigs (long term average of 5545) and 1449 rabbits (long term average of 2065).



**Figure 4. Specified primate use, 2005–14**

A total of 143 non-human primates were used in 2014, compared with the long term average of 176. It comprised 56 marmosets (long term average of 103) and 87 macaques (long term average of 71). In 2011, the above average number of marmosets was due to two projects using 145 animals in studies of social behaviour.



### 3. Aspects of animal use

Figure 5. Animal use by project mission for the past five years (rounded)

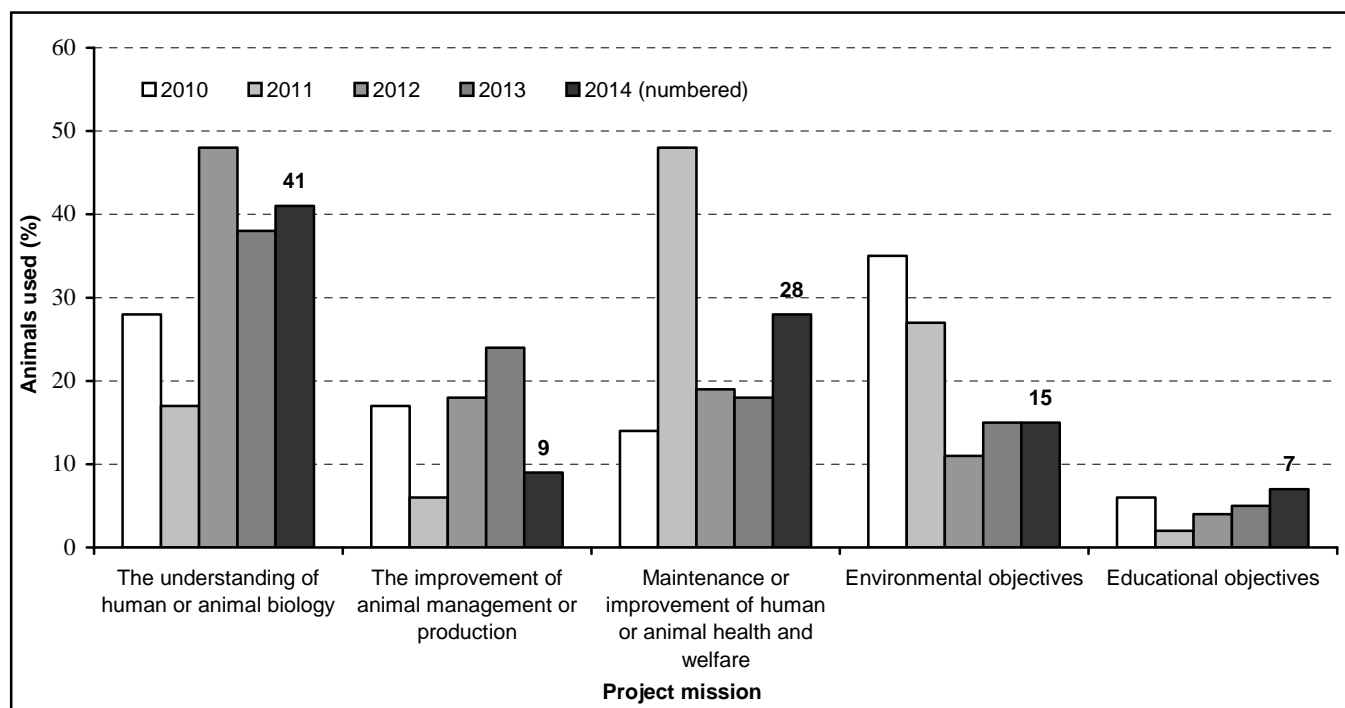
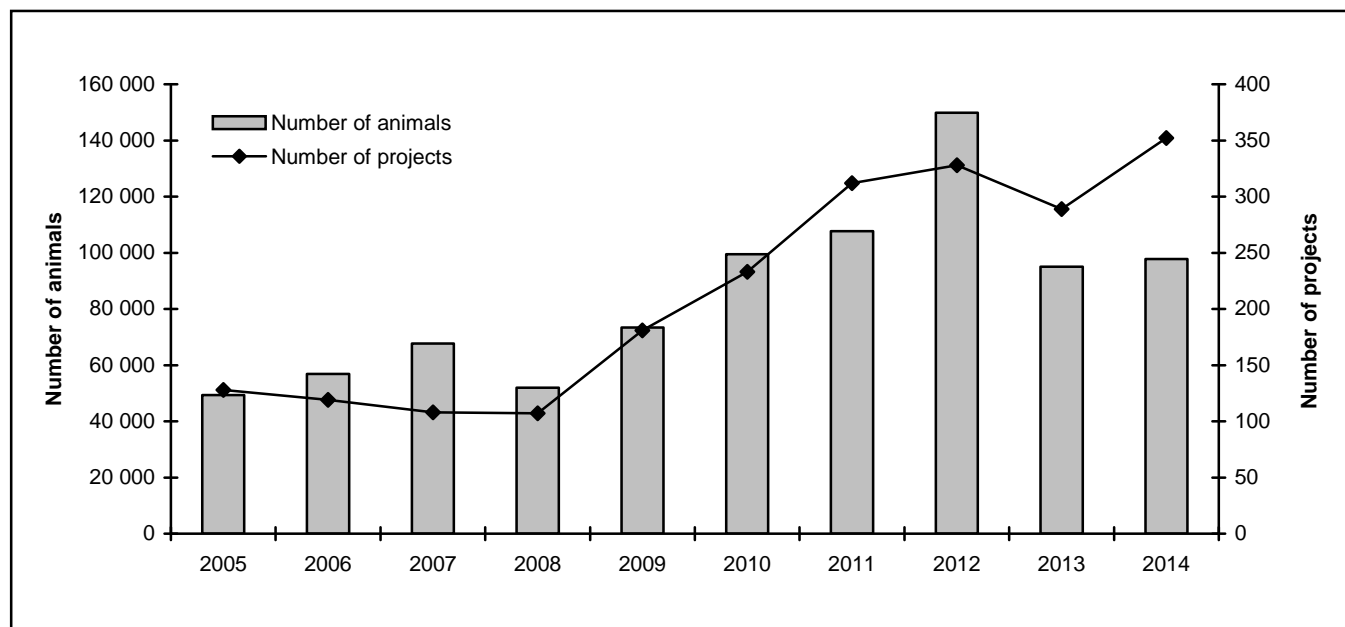
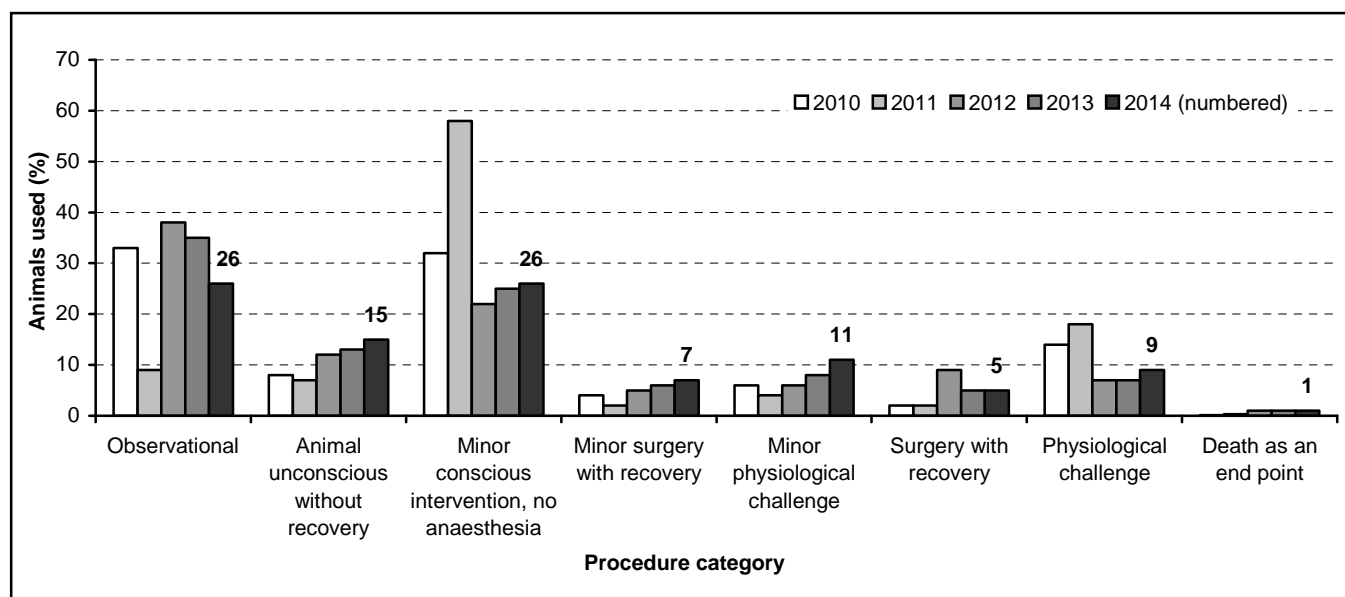


Figure 6. Animals used in genetic modification procedures, 2005–14

A total of 352 projects used 97 812 animals in genetic modification in 2014.

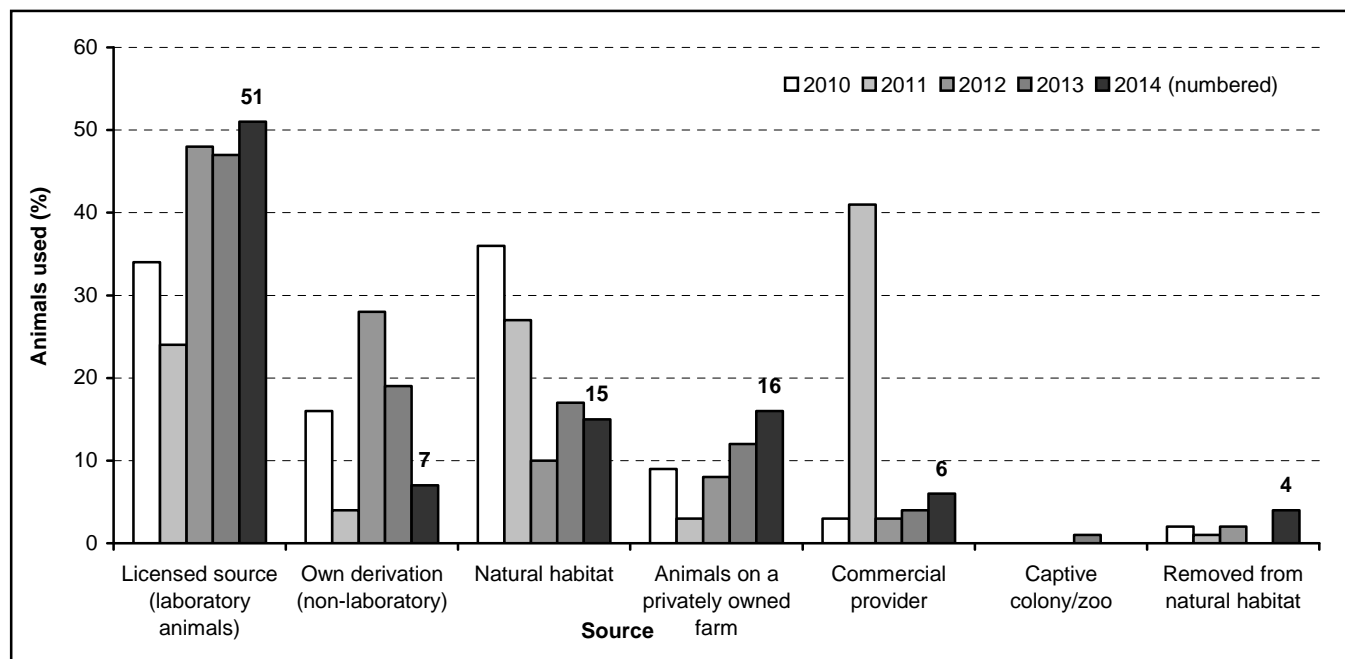


**Figure 7. Animal use for the past five years, by procedure category (rounded)**



**Figure 8. Animal use for the past five years, by source (excluding sources representing less than 1 per cent of animal use)**

The high proportion of commercially provided animals in 2011 is explained by single poultry project that used 1 000 000 birds.





## 4. Specified animals in breeding colonies

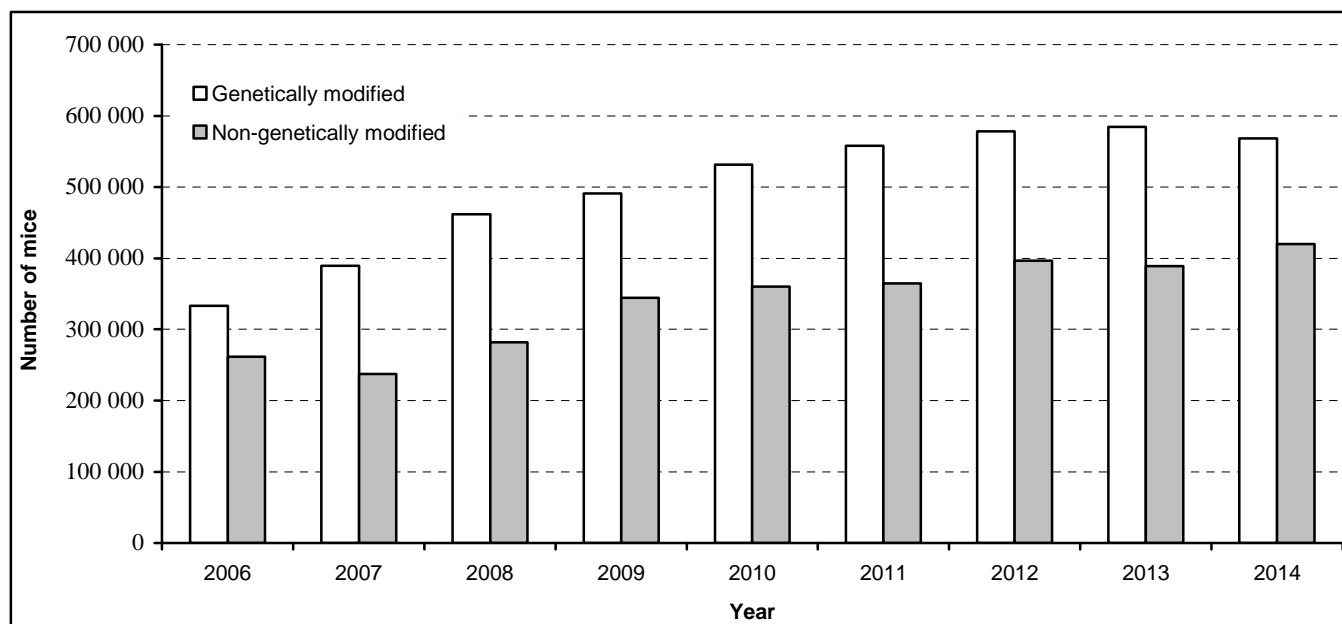
**Table 1: Specified non-genetically modified animals in breeding colonies for scientific procedures, 2006–14 (including numbers not in figures 1, 2, 3 and 4)**

Type of animal (non-genetically modified)	Year								
	2006	2007	2008	2009	2010	2011	2012	2013	2014
Guinea pigs	2604	3638	1142	1087	1153	388	320	244	345
Macaques	159	203	341	225	243	250	244	226	263
Marmosets	173	159	135	166	177	156	146	273	305
Mice	261 697	237 246	281 875	344 823	360 185	365 009	396 710	389 049	420 126
Rabbits	638	527	504	515	445	489	214	197	133
Rats	31 391	33 407	42 558	56 993	52 786	48 543	31 886	33 308	25 546
<b>Total</b>	<b>296 662</b>	<b>275 180</b>	<b>326 555</b>	<b>403 809</b>	<b>414 989</b>	<b>414 835</b>	<b>429 520</b>	<b>423 297</b>	<b>446 718</b>

**Table 2: Specified genetically modified animals in breeding colonies for scientific procedures, 2006–14 (including numbers not in figures 1, 2, 3 and 6)**

Type of animal (genetically modified)	Year								
	2006	2007	2008	2009	2010	2011	2012	2013	2014
Mice	333 266	389 632	461 745	490 962	531 098	558 293	578 240	584 660	568 495
Rats	1031	13 120	9304	1923	1146	1744	1381	1992	4271
<b>Total</b>	<b>334 297</b>	<b>394 201</b>	<b>471 049</b>	<b>492 885</b>	<b>532 244</b>	<b>560 037</b>	<b>579 621</b>	<b>586 652</b>	<b>572 766</b>

**Figure 9. Breeding of specified mice, 2006–14 (including numbers not in figures 1, 2 and 6)**



## 5. Scientific procedure licences and projects

**Table 3. Number of projects and number of procedure licences, 2005–14 (including only licences and projects that used animals).**

	Year									
	2005	2006	2007	2008	2009	2010	2011	2012	2013	2014
Number of projects	2458	2386	2358	2455	2673	2931	3010	3048	2940	2950
Number of licences for procedures using animals	99	104	110	107	111	115	123	127	130	133
Number of projects per licence	25	23	21	23	24	25	24	24	23	22

**Table 4. Number of animals used and number of licences, 2005–14 (including only licences for projects that used animals).**

Figures in parentheses exclude the anomalous poultry project in 2011.

	Year									
	2005	2006	2007	2008	2009	2010	2011	2012	2013	2014
Number of animals used	1 560 340	1 125 487	1 207 360	1 216 393	2 255 076	1 595 375	2 614 472 (1 614 472)	1 288 810	1 084 507	910 052
Number of licences for procedures using animals	99	104	110	107	111	115	123	127	130	133
Number of animals used per licence	15 761	12 066	10 976	11 368	20 316	13 873	21 256 (13 126)	10 148	8342	6842

**Table 5. Number of animals used and number of projects, 2005–14 (including only projects that used animals)**

Figures in parentheses exclude the anomalous poultry project in 2011.

	Year									
	2005	2006	2007	2008	2009	2010	2011	2012	2013	2014
Number of animals used	1 560 340	1 125 487	1 207 360	1 216 393	2 255 076	1 595 375	2 614 472 (1 614 472)	1 288 810	1 084 507	910 052
Number of projects	2458	2386	2358	2455	2673	2931	3010 (3009)	3048	2940	2950
Number of animals used per project	635	472	512	495	844	544	869 (537)	423	369	308

